

# MACHO 55

## PROCESS VESSEL



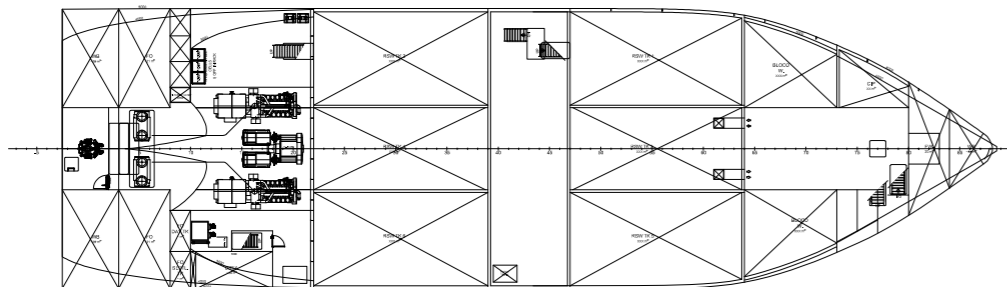
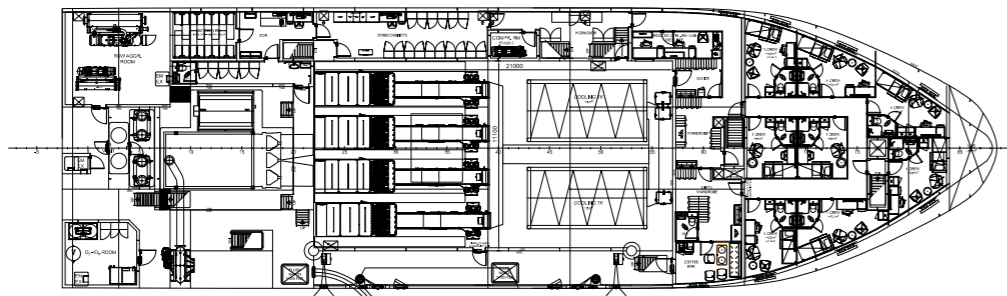
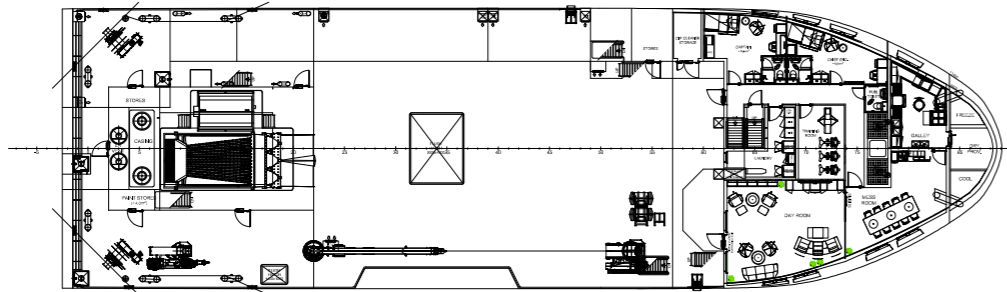
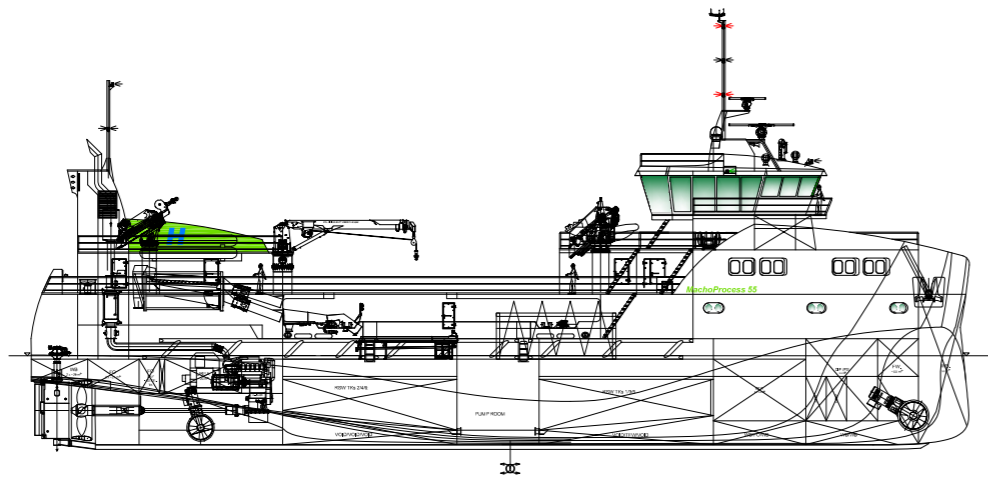
Scan to watch  
the video of  
concept

# 55m

Concept for careful stun & bleed and  
transport of fish from fish farms to the  
onshore processing plant.



# Specs.



## Main Characteristics

Length over all	55.00 m
Breadth	16.40 m
Service speed	13.0 knots
Class	DnV 1A1 + E0
Tonnage	1.900 tons

## Capacities

Baader factory capacity	100 tons/h
Dead fish capacities, about	500 tons
Fish holds	6 x 120 m <sup>3</sup>
Fresh water	70 m <sup>3</sup>
MDO Fuel oil	90 m <sup>3</sup>
Water ballast	200 m <sup>3</sup>

## Power Supply

MDO main engine	2 x 1.300 kW
Battery plant	500 kWh
Hydrogen cell	option

## Propulsion And Maneuvring

Schottel azimuths	2 x 750 kW
Propeller diameter CCP	3.0 m in nozzle
Forward thruster	350kW
Aft Thruster	350kW
Rudder	Becker Flap

## Service Vessel functions

Free deck area	400 m <sup>2</sup>
Max deck load	500 tons
Crane 1	150 tm, 6 tons
Crane 2	65 tm, 6 tons



CAPACITY:

500 TONS

### Superb Fish Handling

The vessel is designed for optimal onboard logistics and minimizing of all pipe lengths and turns. Optimized flow and processing ensure superb fish quality.

The fish is to be loaded in a separate system and after grading the fish is carefully transported into the Baader factory for automatic stunning and bleeding before storage in six optimally designed RSW tanks.

Unloading from vacuum system is arranged between the fish tanks.

## Emission-free

Water which has been in contact with live fish is to be cleaned and filtered before dropped below water line.

Water which has been in contact with dead fish, will be stored in large tanks for to be delivery on-shore.

After process and delivery an advanced automatic system will clean and disinfect pipes, tanks and the factory.

## Optimal Seaworthiness

Bilge keels and efficient anti-rolling tank ensure favourable conditions for fish cargo and people.

The hull length, form and flap

rudder in combination with two large side thrusters gives excellent maneuverability at the fish farms.



H<sub>2</sub>  
6000 kWh

## Green profile

The concept has a green “state-of-the-art” environmental profile, with extremely well-proportioned hull lines, electric propulsion with a combination of large battery package, hydrogen cells and diesel engines. Fuel saving measures have been taken in designing of the fish equipment. Vessel is also arranged with a heat recovery and exhaust cleaning system and a high-efficiency shore power system.